

PRODUCT DESCRIPTION

Delignit®-multifunctional rail

Material: aluminium (extruded profile)

Property rights: patented

Airline system: 25 mm hole spacing with 20 mm bore for all commercially available fittings, hooks, locking rods, nets, etc.

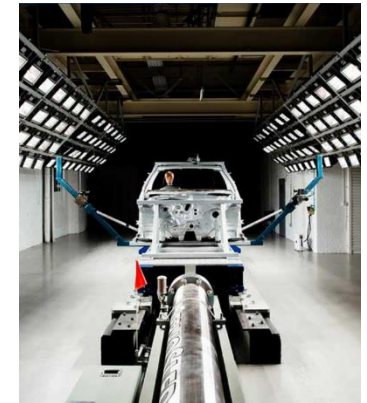
System grooves: System grooves on the top and bottom to accommodate hammer nuts M6 and M8,
System grooves on the front to accommodate hammer nuts M6.

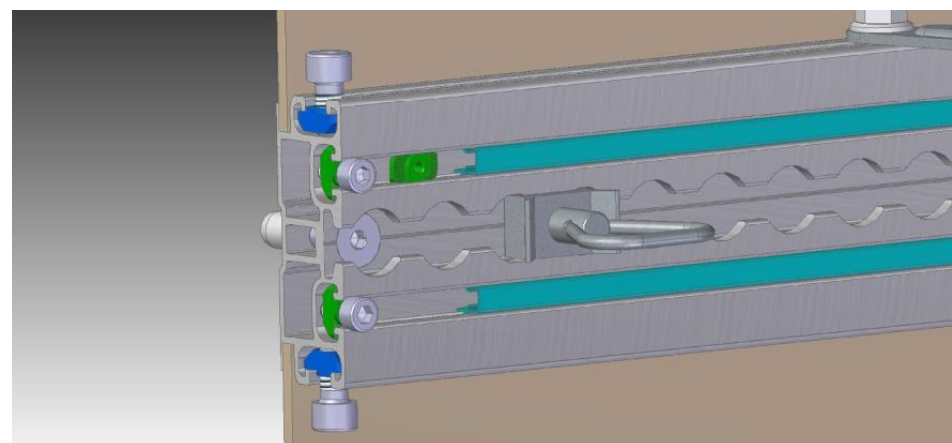
Vehicle equipment: Adapters for mounting in-vehicle equipment from a wide range of manufacturers are available for the system grooves on the top and bottom. In contrast to the classic fastening of in-vehicle equipment, drilling into the bodywork is avoided and thus corrosion protection is maintained. It is always guaranteed that sensitive areas of the vehicle structure or the technology installed behind it are not damaged - likewise a problem-free damage-free retrofitting is possible at any time. The assembly time is reduced to a minimum.

Tests Crash Test by Millbrook Proving Ground, UK
Test facility Servo Sled™ Catapult Sled Systems
Maximum acceleration 20g/ms
Maximum loading of vehicle equipment (payload ./ 2 drivers ./ tank filling) No partition installed
Maximum load: 22,080 kg

Additional linings: If required, thicker claddings made of wood or aluminum materials can be attached to the front system grooves, whereby the parallelism of the parapet and ceiling rails ensures simple and quick adjustment. Likewise, perforated sheets can be mounted quickly and easily in front of the side claddings and hook systems can still be hooked in. Of course, the retrofitting is done in a few minutes without any damage.

Accessory: A wide variety of connectors and claddings can be attached to the system grooves with a force-fit connection. For example, system connectors, wood-based components and shelves can be easily and quickly connected to the vehicle. For the system grooves, a rubber piping is available, which protects transported cargo against damage. Further accessory products are in preparation.





BLOMBERGER HOLZINDUSTRIE GMBH

32817 Blomberg – Deutschland – Postfach 11 53 – Tel.: +49 (0) 5235 / 966-0 – Fax: +49 (0) 5235 / 966-351

w w w . d e l i g n i t . c o m

